





About us

NJ MARITECH is Specialized in the Design, Engineering & Supply of Marine Equipments and System. We have Positioned Ourselves to Offer Total Solution for All Marine Requirements. Our Corporate Office is located in Ajman Emirates, UAE.

Our Company will be able to assist you in all your Requirements of Fendering Solution, Mooring Solution, Buoyancy Solution, Deck Hardware & Equipment, Aids to Navigation and all kind of Marine Products.

We offer Products and Services to Major Ports & Harbors, Oil & Gas Operations, Offshore Operators, Vessel Owners, Ship Chandlers, Marine Traders, Shipyard, Marine Contractors & Consultants and many more.

We would like Sincerely thank our Clients, Suppliers and Members of the NJ MARITECH Team for Constant Support & Motivation for our Growth over the Years.

Mission

To Provide the Best Products and Solutions to Our Clients and be Accessible in Every Major Maritime Location Worldwide.

Vision

To Design & Build Quality Products and Provide Best Services to the Marine & Offshore Industry.



Vinfred Dcosta, Managing Director

T : +971 50 199 4849

E : vinfred@njmaritech.com

Having 10 Years of Sales, Marketing & Technical Experience in Marine Field.

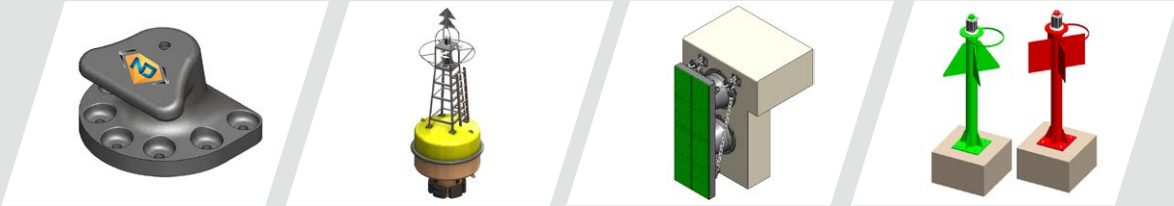
Responsible for Business Development & Management of Worldwide Sales.



Research and Development

Our Hi-Tech Infrastructure & highly talented Team puts their efforts to Satisfy our Clients with desired Quality Products. Our Team comprises Qualified R & D Professionals, Logistics Agents and other Supporting Staff, who by Works Round the Clock to Fulfill Set Objectives Successfully & within Time Frame.

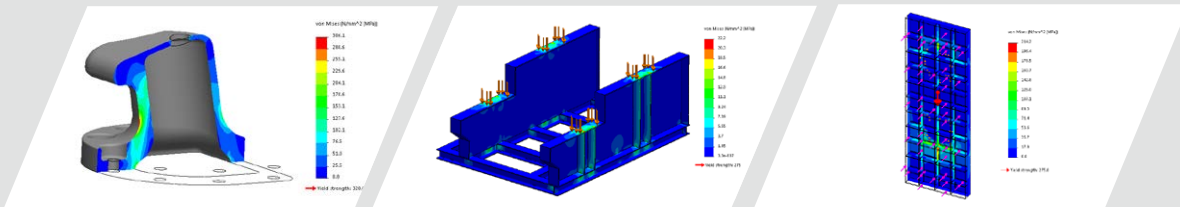
PRODUCT DESIGN



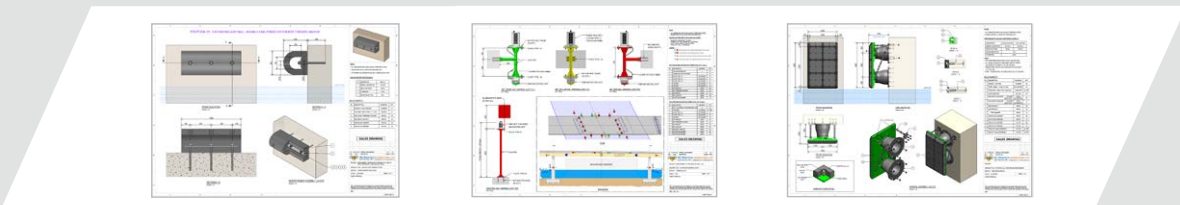
STRUCTURAL DESIGN



FINITE ELEMENT ANALYSIS



BID & CONSTRUCTION DRAWING





Berthing



CONE FENDER (NCN)

This type of fender can be considered as the latest in state-of-art molded fender products. Its refined geometry and conical shape result in a number of outstanding performance characteristics.



PERFORMANCE CHARACTERISTICS:

- Higher Energy Absorption to Reaction Force Ratio (E/R).
- Outstanding energy absorption per weight of fender.
- High shear stability which allows the fender to carry even larger panel weights without using chains.
- Very good inherent resistance against shear forces due to its geometry and self-centering characteristics.
- No reduction of energy absorption up to 10° compression angle.
- Internal overload stopper as OPTIONAL.
- Availability in heights between 300 and 2000 mm..

CELL FENDER (NCL)

This fender has a hollow cylindrical body with fully rubber-embedded mounting flanges and is designed to deflect in an axial direction. Cell fenders are very robust and have been used for decades in many ports around the world.

PERFORMANCE CHARACTERISTICS:

- Good Energy Absorption to Reaction Force Ratio (E/R)
- Integrated and fully-embedded fender flanges make assembly & installation simple.
- Good shear force resistance due to the large diameter of the fender flanges.
- Large fender foot print with good force distribution could lead to relative light panel construction.
- Available in heights between 400 to 3000 mm, each in various different hardness grades for the most precise fender selection



ELEMENT FENDER (NEL)

Element fenders are fully molded rubber legs with embeded mounting plates. In principal they are based on V-fenders but separated legs increases fender layout flexibility when installed behind steel panels or where mounting space is restricted.



PERFORMANCE CHARACTERISTICS:

- Good Energy Absorption to Reaction Force Ratio (E/R)
- High energy absorption per weight of rubber
- Modular and compact design with small footprint
- Vertically and horizontally mounted elements may be combined in one system
- The NEL fender element is available in heights between 250 to 2000 mm, in standard lengths ranging from 500 to 2000 mm each in various hardness grades for the most precise fender selection.

TR FENDER (NTR)

NTR Fenders are an innovation in modern element fender. These fenders having fender fitting flanges at both sides which offer more sturdiness as compared to element type of fenders. In principle they are based on V-fenders but separated legs increase fender layout flexibility when installed behind steel panels or where mounting space is restricted.

PERFORMANCE CHARACTERISTICS:

- Good Energy Absorption to Reaction Force Ratio (E/R)
- High energy absorption per weight of rubber
- Vertically and horizontally mounted NTR fenders may be combined in one system
- The NTR fender element is available in heights between 400 to 2000 mm, in standard lengths ranging from 500 to 2000 mm each in various hardness grades for the most precise fender selection



ARCH FENDER (NAH)

Arch fenders are simple and rugged, providing reliable and trouble-free service for a wide variety of berths even under the most severe conditions. The NAH fender is a traditional rubber faced unit with considerably greater energy absorption.



PERFORMANCE CHARACTERISTICS:

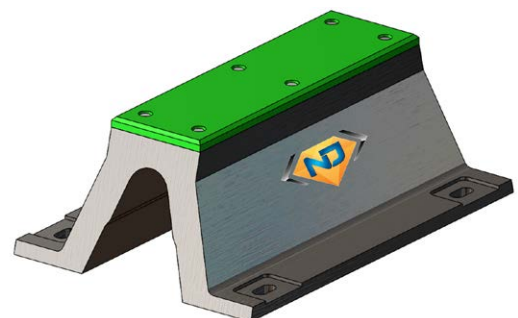
- Simple one piece design.
- Excellent shear performance.
- Can be arrange vertically or Horizontally.
- Good energy absorption and low reaction force.
- The NAH fender is available in heights between 150 to 1000 mm, in standard lengths ranging from 1000 to 3500 mm each in various hardness grades for the most precise fender selection

ARCH FENDER WITH UHMW (NAHP)

Arch fenders are simple and rugged, providing reliable and trouble-free service for a wide variety of berths even under the most severe conditions. The NAHP fender can be fitted with either UHMW-PE or connected to a steel panel.

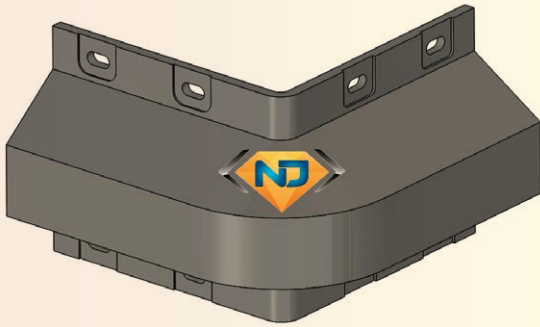
PERFORMANCE CHARACTERISTICS:

- Simple one piece design.
- Excellent shear performance.
- Can be arrange vertically or Horizontally.
- Good energy absorption and low reaction force.
- The NAHP fender is available in heights between 150 to 1000 mm, in standard lengths ranging from 1000 to 3500 mm each in various hardness grades for the most precise fender selection



CORNER ARCH FENDER (NCA)

NCA series Corner Arch Fenders are an improved version of other solid fenders like Arch & Wheel fender. The NCA fender can be also fitted with UHMW-PE pads.



PERFORMANCE CHARACTERISTICS:

- Good Energy Absorption to Reaction Force Ratio (E/R)
- Excellent shear performance.
- High load carrying capacity.
- The NCA fender is available in heights between 150mm, 200mm & 300 mm in respective lengths of 1000mm, 725mm, 625mm.

FOAM FILLED FENDER (NFF)

NFF series Foam Filled fenders are extremely robust and do not suffer loss of performance even if damaged. Foam filled floating fenders are used as alternative solution to both fixed fenders and pneumatic fenders. They are widely used in Heavy duty ship-to-ship lightering operations & all Navy vessel berths due to low hull pressure.

PERFORMANCE CHARACTERISTICS:

- Optional chain/tyre net for heavy duty applications.
- The NFF fender is available in Diameter from 300mm to 4500 mm in standard lengths of maximum 12000mm



PNEUMATIC FENDER (NPF)

NPF series Pneumatic fenders can easily be deflated which allows simple and cost efficient relocation and recommissioning in other locations. Pneumatic fenders are a proven alternative to fixed fenders and are preferably used in ports with extreme tidal variations, for ship-to-ship lightering operations & for all Navy vessels due to low hull pressure and the advantage of a proportional increase of reaction force and energy absorption



PERFORMANCE CHARACTERISTICS:

- Optional chain/tyre net for heavy duty applications.
- Two different inside pressure levels to cover a wide performance range.
- Special hydro-pneumatic version for submarines.
- The NPF fender is available in Diameter from 300mm to 4500 mm in standard lengths of maximum 12000 mm

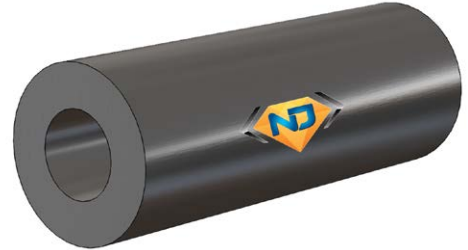


CYLINDRICAL FENDER (NCY)

NCY series Cylindrical Fenders have defined performance. Installation is simply achieved by using chains, bars, ropes or specially designed ladder brackets. Their proportional increase of reaction force and energy absorption all the way to the rated deflection is an advantage resulting in softer berthing.

PERFORMANCE CHARACTERISTICS:

- Very robust and simple fender type
- Easy to install, allowing multiple usage at different berths
- Special dimensions and features such as pre-bending or jointing can be requested.
- The NCY fender is available in Outside diameter up to 2700 mm & standard lengths ranging from 1000 to 3000 mm.



M-TYPE FENDER (NMF)

NMF Fender is improved version of the Arch fender. These fenders are having more deflection and better Energy/Reaction ratio. Because of wide fender face, the Hull pressure is also relatively low as compared to Arch Fenders.



PERFORMANCE CHARACTERISTICS:

- Easy to install
- Good Energy Absorption to Reaction Force Ratio (E/R)
- Excellent shear performance.
- The NMF fender is available in heights between 250 to 1000 mm, in standard lengths of maximum 3500 mm.

NCV FENDER & NBP FENDER

These fenders are having more deflection and better Energy/Reaction ratio. NCV & NBP Fenders are suitable for a wide variety of uses on the berth and on a wharf.

PERFORMANCE CHARACTERISTICS:

- Easy to install
- Good Energy Absorption to Reaction Force Ratio (E/R)
- Excellent shear performance



BOAT OR TUG FENDER (NTF)

Tug or Boat Fenders are more harder & stable under more extreme conditions than any other fender type. A complete "ready to install" fender kit including tapered ends, connecting plugs, end plugs, drill holes as well as numbered stern and bow fender sets are available.



PERFORMANCE CHARACTERISTICS:

- Best performance in dynamic load effect.
- Widely used on ship's Hull & other structural applications.
- The NTF fender is available in Diameter from 200mm to 1200mm

ROLLER & WHEEL FENDER (NRF)

Roller or Wheel fenders help vessels maneuver into berths & narrow channels. They are usually installed to guide ships in restricted spaces like walls of dry docks, on corners & lock entrance.

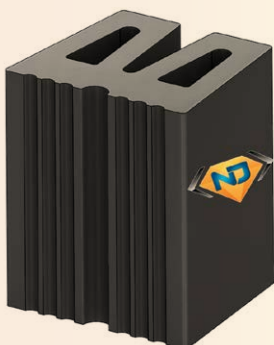
PERFORMANCE CHARACTERISTICS:

- Suitable for all kinds of harbor.
- Provide a defined energy absorption capacity in addition to guiding the vessel.
- Used in single or multiple stacks
- Selection of the appropriate type, size and casing is dependent on the specific project requirements.



W - FENDER (NWF)

NWF fenders offer an excellent alternative to square fenders. A complete "ready to install" fender kit including connecting plugs, end plugs, drill holes as well as numbered stern and bow fender sets are available.



PERFORMANCE CHARACTERISTICS:

- Best performance in dynamic load effect.
- Widely used for Bow & AFT fendering.
- These fenders can also be installed on curved structures and round corners



PE-SLIDING FENDER (NPS)

NPS Sliding fender made of Polyethylene is used in many applications in the marine environment such as on marine structures, pontoons and ships front face for fender panels. UHMW -PE (1000 FQ) mainly used as low friction and rubbing pad for fender panels. HD-PE sliding fenders, predominantly used to replace wooden beams/Timbers.

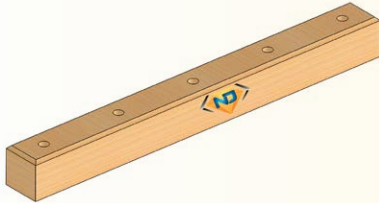
PERFORMANCE CHARACTERISTICS:

- Widely used for low shear force application.
- Easy to install
- Provides a simple & extremely durable fendering solution



TIMBER FENDER (NTF)

The most common wood used in Marine fendering is GREENHEART (Ocotea rodiael) is one of the strongest commercially available Timbers in the market.



PERFORMANCE CHARACTERISTICS:

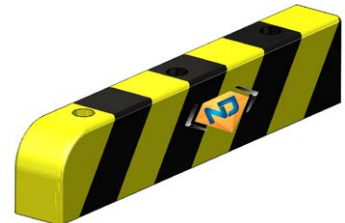
- Ideally suited for salt and fresh water application.
- Easy to install

CAR STOPPER (NCS)

NCS series Car Stopper is made from high density Polyethylene (HDPE) which is excellent water-resistance, abrasion resistance & impact-resistance.

PERFORMANCE CHARACTERISTICS:

- Easy to install.
- Ideally suited for salt and fresh water application



EXTRUDED TYPE FENDERS

Extrude type fenders are commonly used on floating pontoons and on inland waterways for lock protection

PERFORMANCE CHARACTERISTICS:

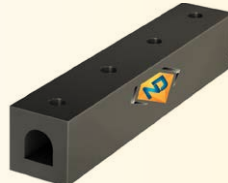
- Easy to install
- Good energy absorption ratio.
- Used for Light/medium duty applications for small vessels.
- Provides a simple & extremely durable fendering solution.



NDD Fender



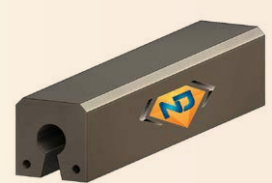
NDO Fender



NSD Fender



NSO Fender



NKH - Key Hole Fender



HYDRO-PNEUMATIC FENDER (NHPF)

Submarines and other vessels that make contact below the waterline need a special fendering solution.

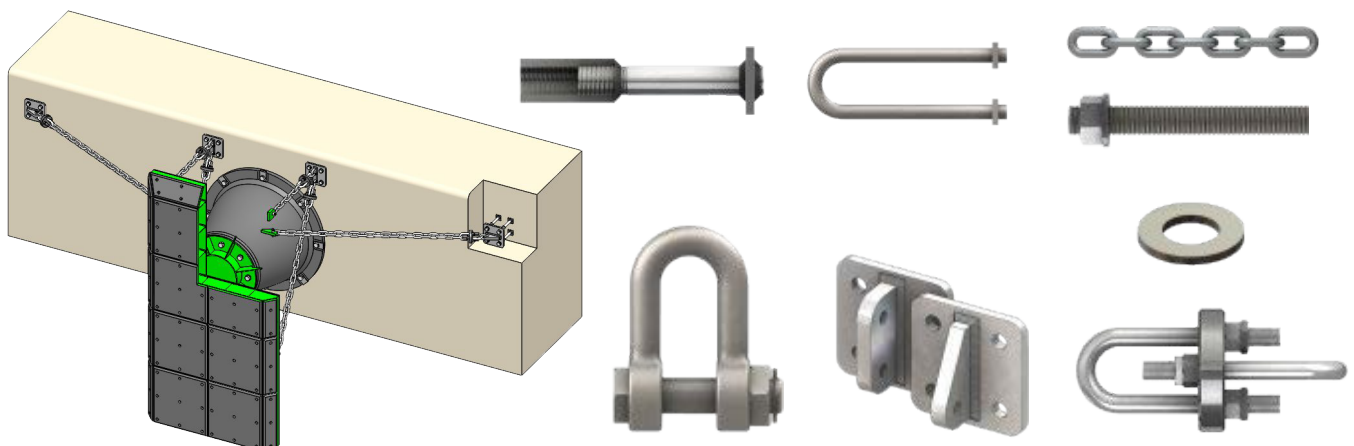
Hydro-Pneumatic fenders are filled with air and water, then fitted with a counterweight to stand vertically and protect submerged hulls.

NJ Maritech can also provide the special calculations for polytropic conditions (saturated air), other air:water ratios, Hull curvatures and other variables to predict exact performance of Hydro-pneumatic fenders.



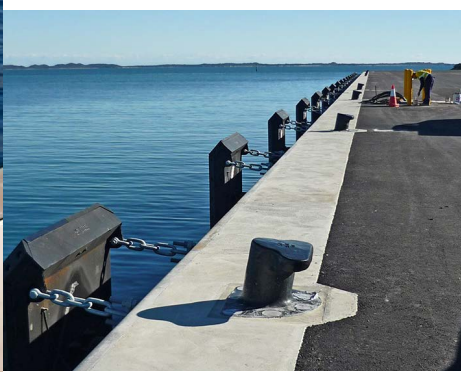
FENDER FIXING ACCESSORIES

High Quality Accessories and Fixings to Assemble and Install fenders are an important part of each Fender Solution. We Supply Cast-in, Resin anchors, Bolts, Nuts and Washers in different material Grades like Stainless Steel, Super Duplex Mild Steel etc. to comply with specifications and local corrosion environments. To ensure a trouble free and smooth installation on site, all components are checked prior to delivery.





Mooring



T-HEAD BOLLARD (NTB)

T-Head Bollard can provide more holding power than any other bollard in its class. Integrated load fuses and capacities up to 200 Tons are available.

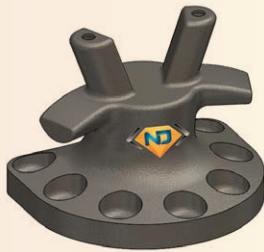
FEATURES:

- High Holding Power.
- Suitable for Steeper Rope Angles.
- Custom Design & safety factors can be adjusted to user requirements.



STAGHORN BOLLARD (NSB)

Staghorn Bollard can handle high line angles and can be fitted with load fuses and retrofit base plates. Integrated load fuses and capacities up to 200 Tons are available.



FEATURES:

- High Holding Power.
- Suitable for multiple mooring lines from one or two vessels.
- Suitable for Steeper Rope Angles.
- Custom Design & safety factors can be adjusted to user requirement.
- Ideal for multipurpose berths.

PILLAR BOLLARD (NPB)

Pillar Bollards are popular & economical choice for applications with a single mooring line per Bollard with lower ranges of vertical line angle. Integrated load fuses and capacities up to 200 Tons are available.

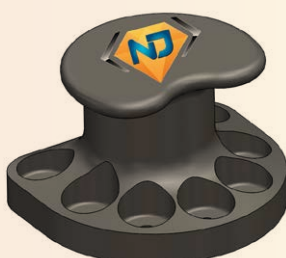
FEATURES:

- Suitable for warping operations.
- Custom Design & safety factors can be adjusted to user requirements.



KIDNEY BOLLARD (NKB)

Kidney Bollards are popular & economical choice for applications with a single mooring line per Bollard with lower ranges of vertical line angle. Integrated load fuses and capacities up to 200 Tons are available.



FEATURES:

- Suitable for warping operations.
- Custom Design & safety factors can be adjusted to user requirements.



SINGLE BITT BOLLARD (NSBB)

Single Bitt Bollard can handle high line angles and can be fitted with load fuses and retrofit base plates. Integrated load fuses and capacities up to 200 Tons are available.



FEATURES:

- Suitable for High tidal ranges.
- Versatile Bollard due to its simple and basic design.
- Custom Design & safety factors can be adjusted to user requirements.

DOUBLE BITT BOLLARD (NDBB)

Double Bitt Bollard are useful for multiple mooring lines. The two column design allows two independent lines to be secured or released without interfering with other lines. Integrated load fuses and capacities up to 200 Tons are available.

FEATURES:

- Suitable for High tidal ranges
- Popular in Navy berths, shipyards or any high movement berths.
- Custom Design & safety factors can be adjusted to user requirements



MOORING CLEAT (NCL)

Mooring cleats are widely useful on Marine offshore structures. It can be installed horizontally or vertically. Integrated load fuses and capacities up to 100 Tons are available.



FEATURES:

- Offers versatile rope angles.
- Mainly used on offshore structures.
- Custom Design & safety factors can be adjusted to user requirements

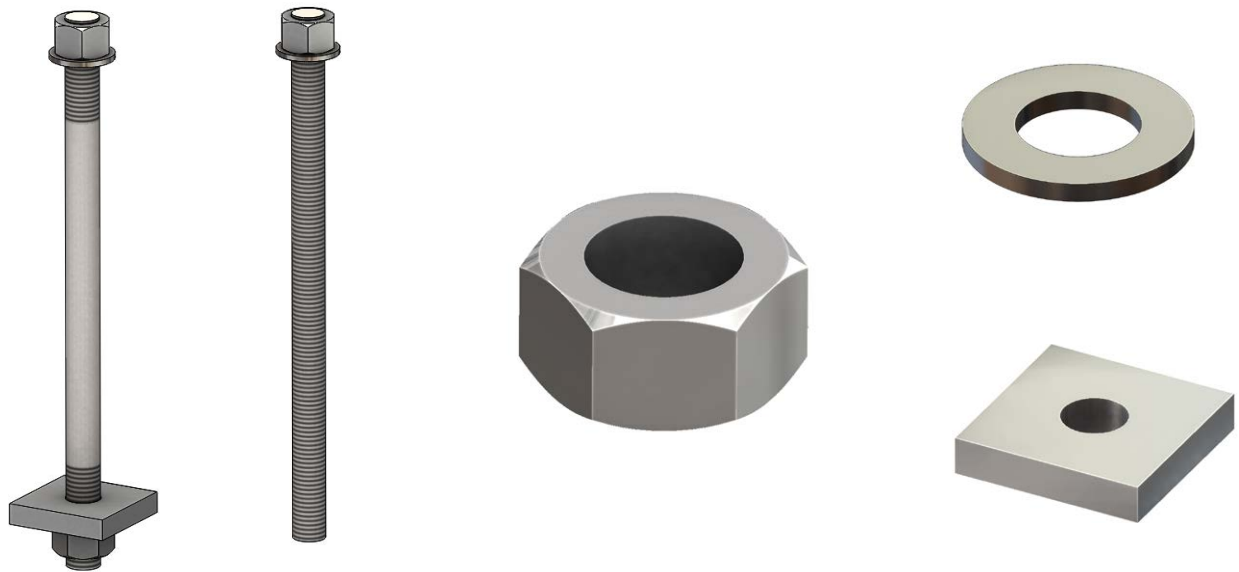
STRAIGHT POST (NSP)

NSP Bollards are popular & economical choice for applications with a single mooring line per Bollard with lower ranges of vertical line angle. Integrated load fuses and capacities up to 200 Tons are available.



BOLLARD FIXING ACCESSORIES

We Supply Cast-in or Resin Anchors, Bolts, Nuts and Washers in different material grades like Super Duplex, Gr. 8.8, Gr. 8.0, A4-80 & Mild Steel etc. to comply with specifications and local corrosion environments. To ensure a trouble free and smooth installation on site, all components are checked prior to delivery.



CAST IN SURFACE



CAST IN RECESSED



RETRO FIT



THROUGH BOLT



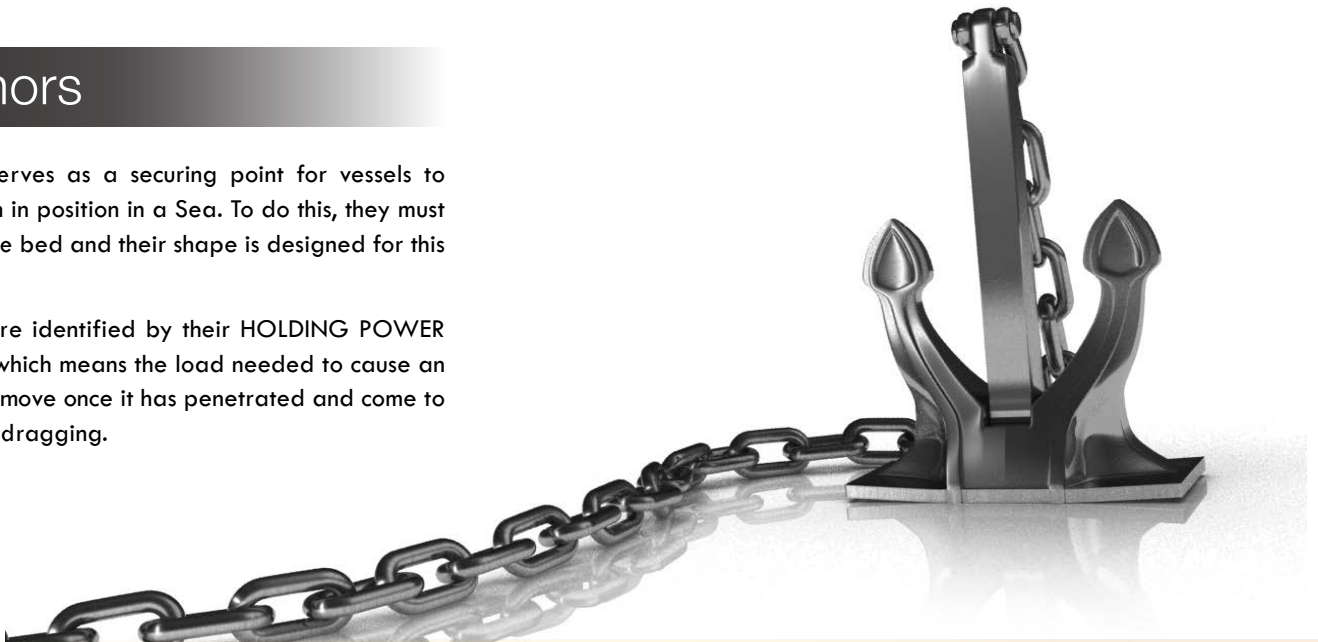
Marine Hardware



Anchors

Anchors serve as a securing point for vessels to keep them in position in a sea. To do this, they must dig into the bed and their shape is designed for this purpose.

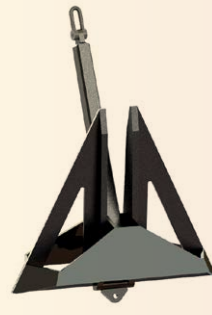
Anchors are identified by their HOLDING POWER capacity which means the load needed to cause an anchor to move once it has penetrated and come to rest after dragging.



AC-14 ANCHOR



DANFORTH ANCHOR



DELTA ANCHOR



HALLS ANCHOR



POOL N ANCHOR



POOL TW ANCHOR



SPEK ANCHOR



BRUCE SS ANCHOR



STEVPRIS ANCHOR

Anchor & Mooring Chain



OPEN LINK CHAIN



STUD LINK CHAIN



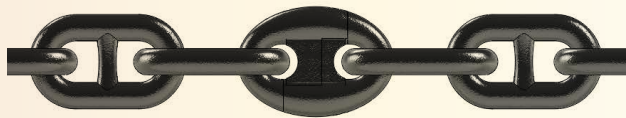
CHAFE CHAIN



SWIVEL



FORERUNNER ASSEMBLY



KENTER ASSEMBLY



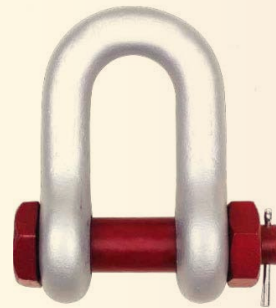
KENTER



Shackle



BOLT NUT TYPE BOW SHACKLE



BOLT NUT TYPE D - SHACKLE



SCREW PIN TYPE BOW SHACKLE



SCREW PIN TYPE D-SHACKLE

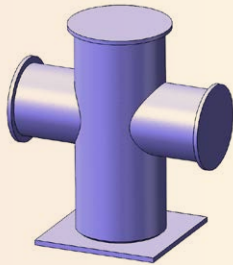


FORELOCK SHACKLE

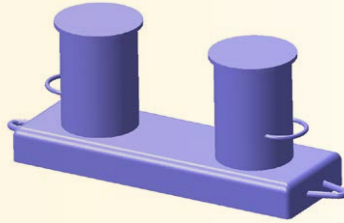


ANCHOR SHACKLE

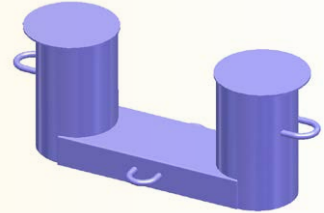
Deck Equipment



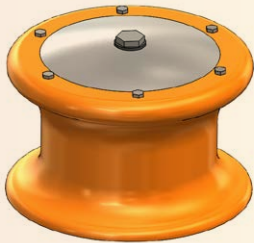
CRUCIFORM BOLLARD



DOUBLE BITT BOLLARD



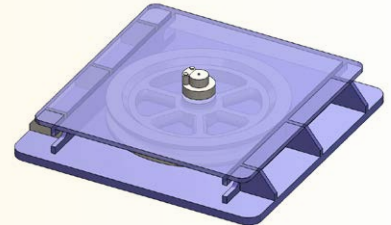
Db138 BOLLARD



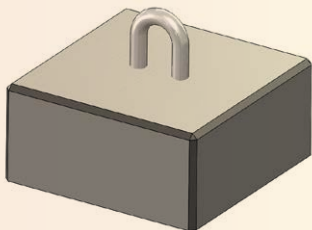
ROLLER



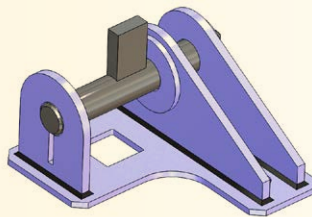
DELTA PLATE



HORIZONTAL SHEAVE



CONCRETE SINKER



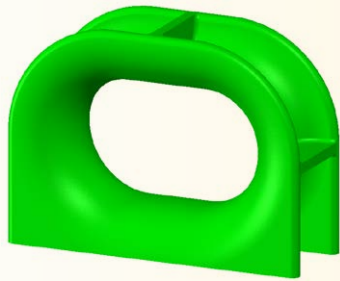
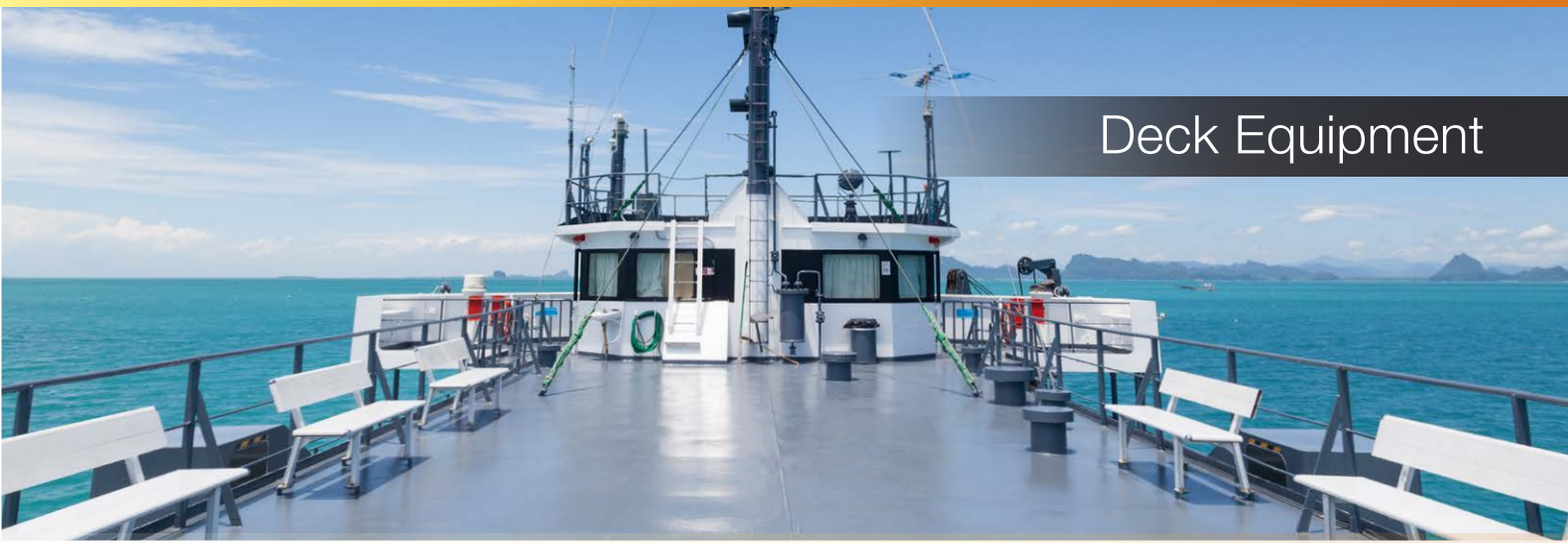
SMITH BRACKET



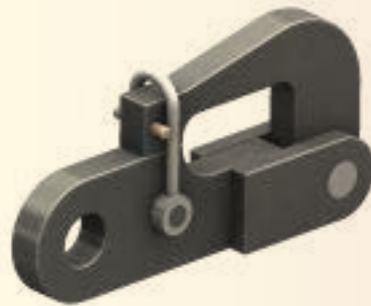
SWIVEL FAIRLEAD



Deck Equipment



JIS F 2005 CHOCK



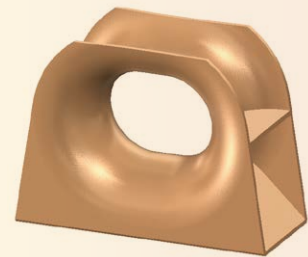
PELICAN HOOK



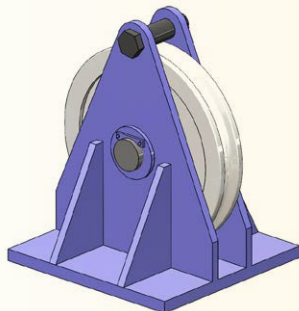
EU TYPE BULWARK CHOCK



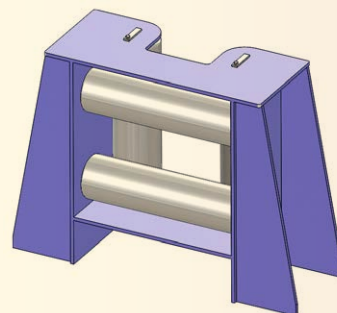
DIN81915 TYPE-A BULWARK CHOCK



EU TYPE DECK CHOCK

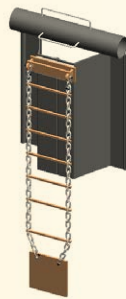
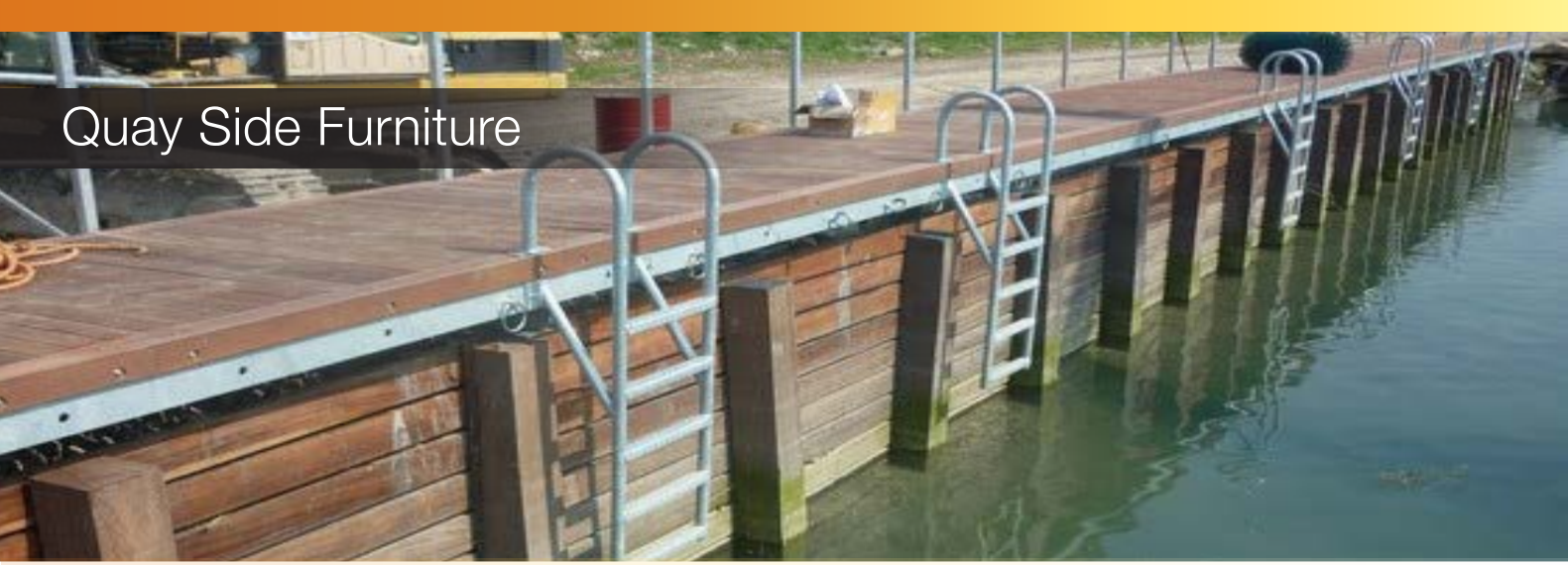


VERTICAL LEAD BOX

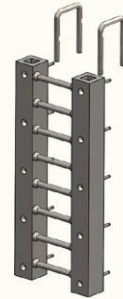


MULTI ANGLE ROLLER

Quay Side Furniture



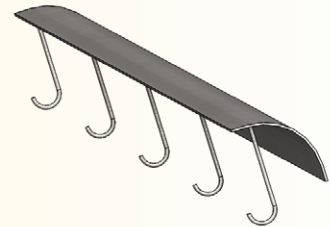
CHAIN LADDER



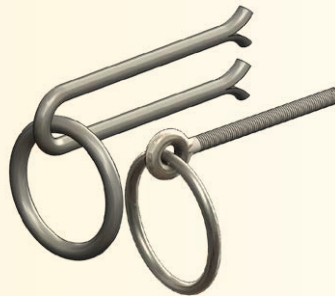
RUBBER LADDER



STEEL LADDER



EDGE PROTECTION



MOORING RING

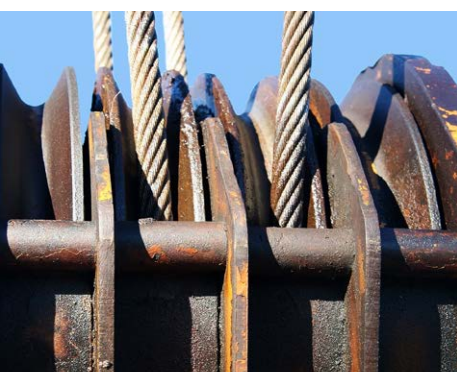


HANDRAIL





Wire Rope



WIRE ROPES

NJ Maritech supply wide ranges of Wire Ropes which are manufactured with state of art technology and ISO 9001 certified We stock the wire ropes in different constructions and we have ranges from 6mm to 114mm. For any assist, please contact to our Sales Office.



NYLON ROPE



POLYPROPYLENE ROPE



SYNTHETIC ROPE



STEEL WIRE ROPE





Heavy Deck Equipments



HEAVY DECK EQUIPMENTS

NJ Maritech is supplier of Marine Winches, Capstan, Boat Davits, Quick Release Hook and Windlass. Our products have become the trusted choice of our customers. Not only are NJ Maritech products reliable and easy to use, our after sales service is a defining benefit of choosing our products. For any assist, Please contact to our Sales Office.



ELECTRIC WINCH



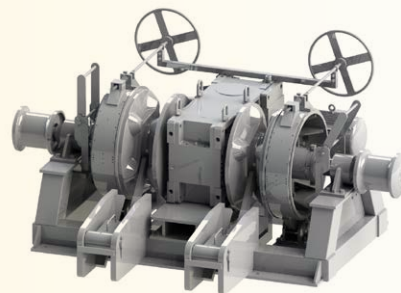
HYDRAULIC WINCH



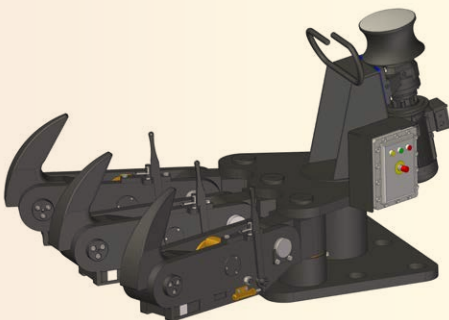
PNEUMATIC WINCH



MOORING CAPSTAN



WINDLASS



QUICK RELEASE HOOK

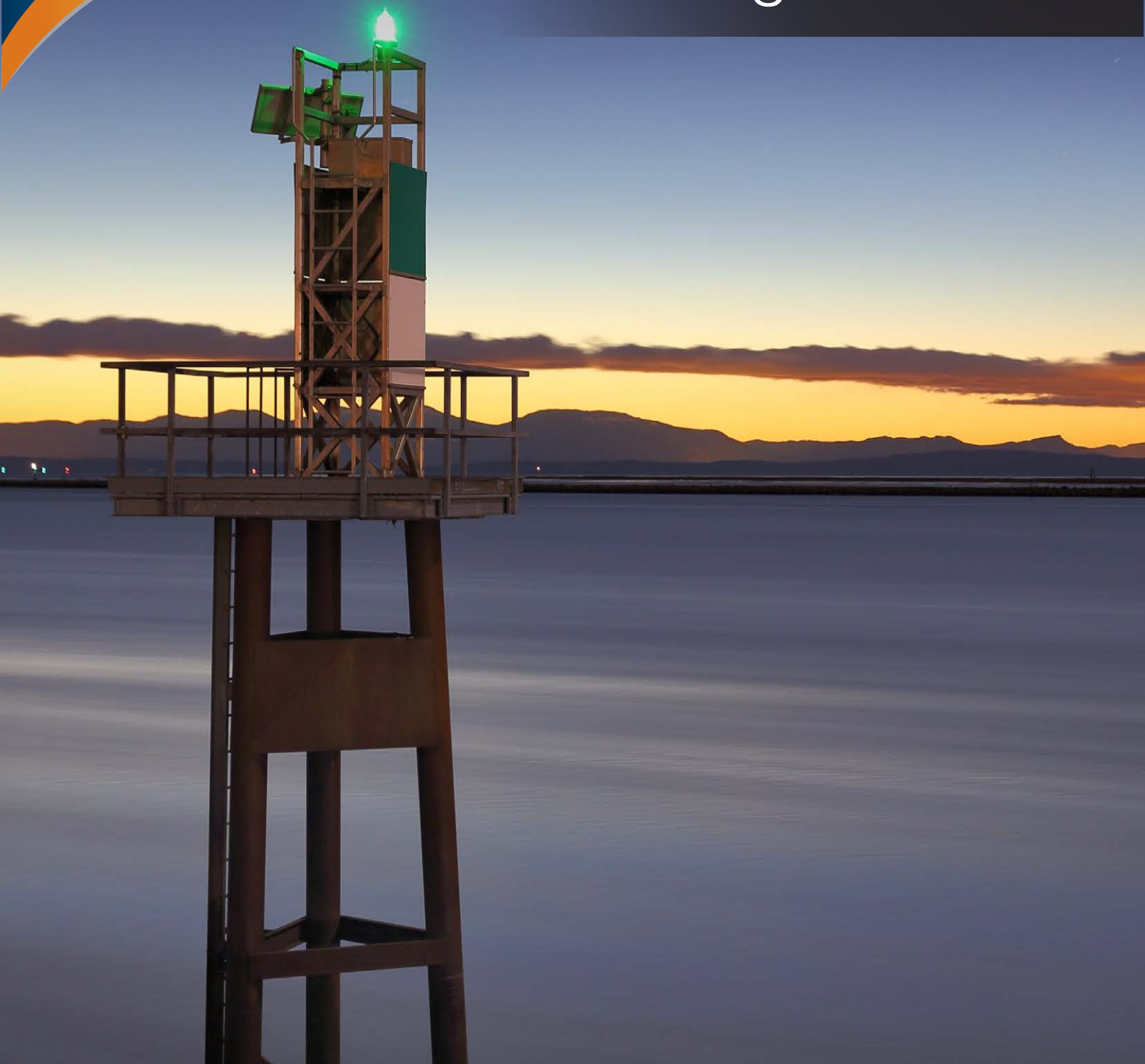


DAVIT





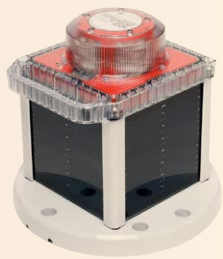
Navigation Aids



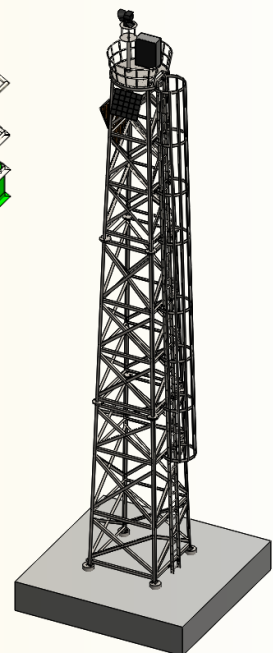
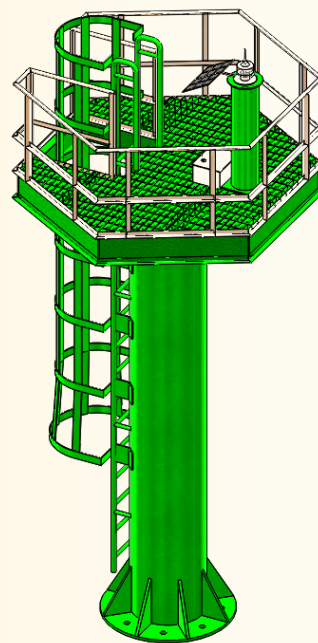
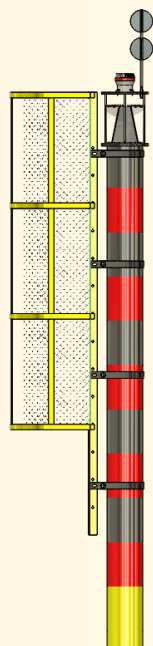
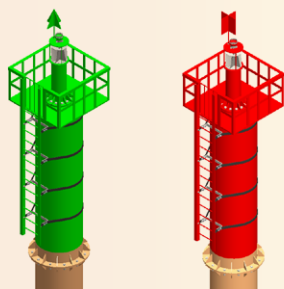
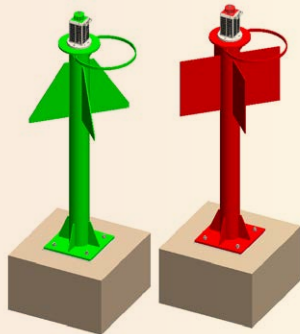
NAVIGATION AIDS

NJ Maritech is deeply involved in the Design and supply of a wide range of Navigational Aids. We supply the traditionally constructed Steel Buoys, in addition to the latest and most updated rotomoulded PE buoys. Elastic Beacons are designed and produced with the aid of a dedicated fully computerized stability and performance calculation program.

We supply a well variety of Pole Beacons, Towers and other accessories. We supply all those materials and equipment which are designed and produced in accordance to the IALA recommendations and specifications. For any assist, please contact to our Sales Office.



NAVIGATION LANTERNS



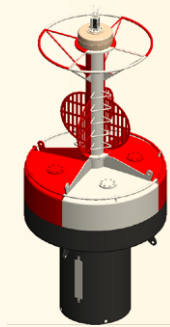
NAVIGATION TOWERS



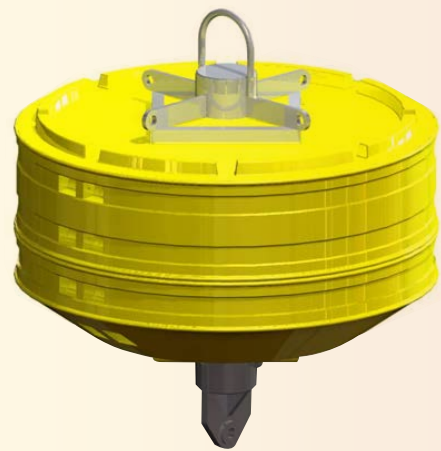
NAVIGATION BUOYS

We are specialized in complete arrangement of

- Polyethylene buoys
- Steel buoys and elastic beacons
- Mooring buoys
- LED lanterns
- Leading and sector lights
- Rotating beacons and lighthouses equipment
- Control and monitoring systems
- Radio Aids (RACON, AIS)
- Support structures and towers



STEEL BUOYS

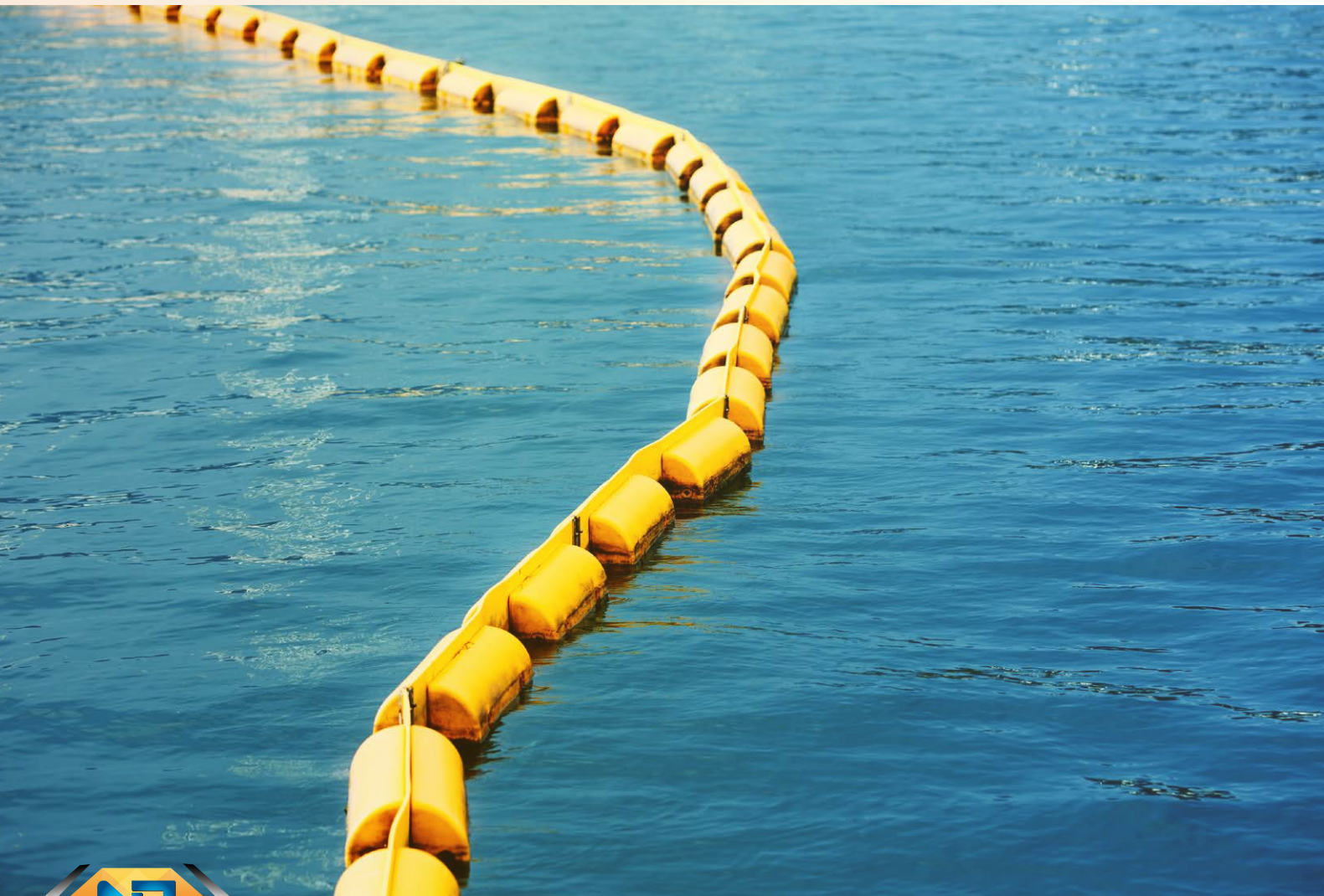
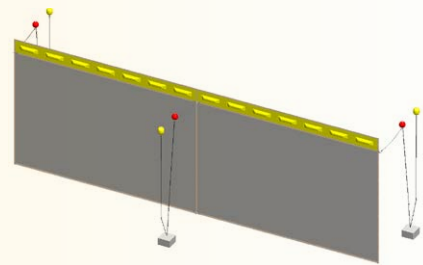
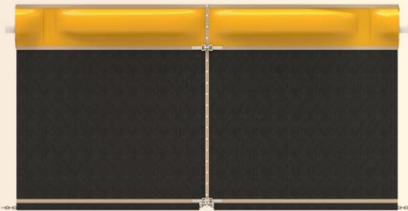


PE BUOYS

BARRIER SYSTEM

NJ Maritech Barrier Systems are designed and produced with the dedicated fully computerized stability and performance calculation program. We supply a well variety of below barrier systems.

- Turbidity Barrier System
- Oil & Debris Barrier System
- Trash Net Booms
- Water Intake Barrier System

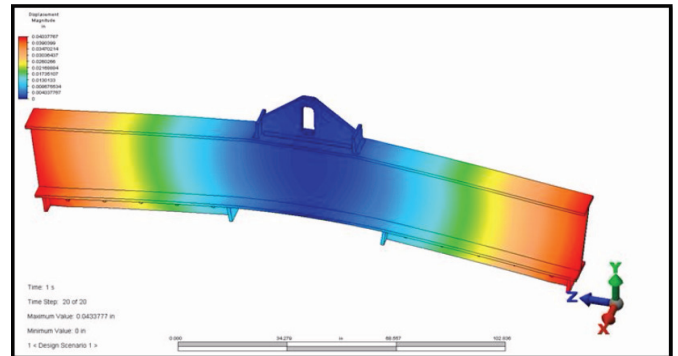


SPREADER BEAM (Lifting Equipments)

Spreader Beams are the Practical & Safe choice for either Long Material to Prevent Sagging & Shifting, or for Loads where the Weight has to be Carefully Distributed or Suspended from Several Points. They can take many forms but are Generally Straight Multipoint, Cruciform or H Shaped.

PERFORMANCE CHARACTERISTICS:

- Available in Adjustable Lifting Points.
- Easily Handle both Wide & Unbalanced Loads.
- Shackles Included
- Optional Swivel Hooks are available.
- Optional Chain Top Rigging Available.
- Complies with ASME & BS Standards.



Every Beam is CAD Designed and Supplied to individual Customer's Requirements and with Specifications in Accordance with Standard BS EN 13155



HOSE & COUPLING

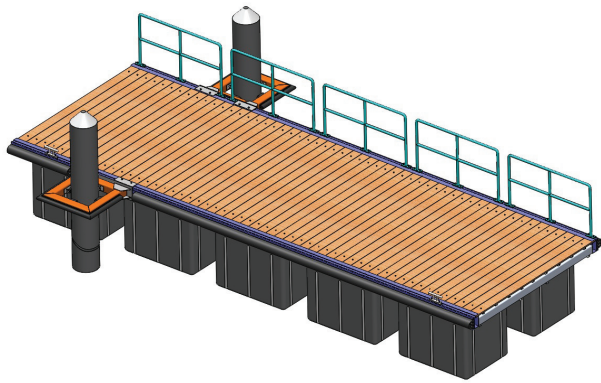
A Hose is a flexible hollow tube designed to carry fluids from one location to another. Hose design is based on a combination of application and performance. Common factors are size, pressure rating, weight, length, straight hose or coil hose, and chemical compatibility.

We Provide flexible rubber and composite hoses and assemblies for the onshore and offshore industry. We can offer hose and coupling solutions for safely conveying media used in onshore oilfield applications including LNG and Drilling Fluid transfer, or offshore services such as rig supply hoses. Our large bore hose range are custom engineered and mandrel built for dockside and marine applications.



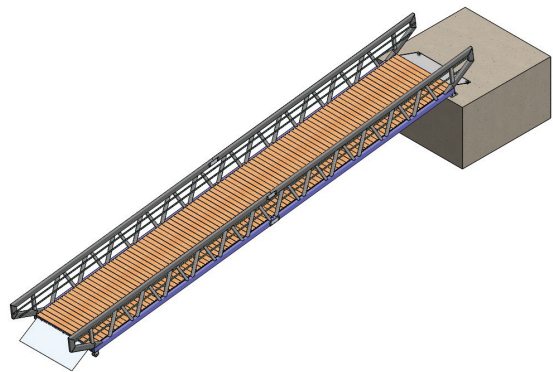
PONTOON & MARINAS (Floating Equipments)

NJ Maritech Design & Supply different types of pontoon modules according to the needs of the user, with re-inforced structures totally made up of marine non-corrosive aluminum profiles ideal to withstand the toughest working conditions.

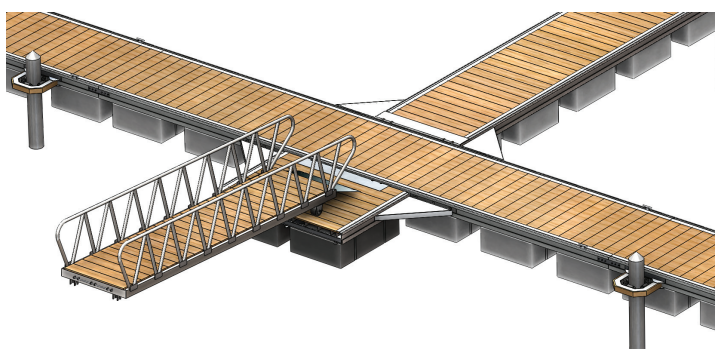
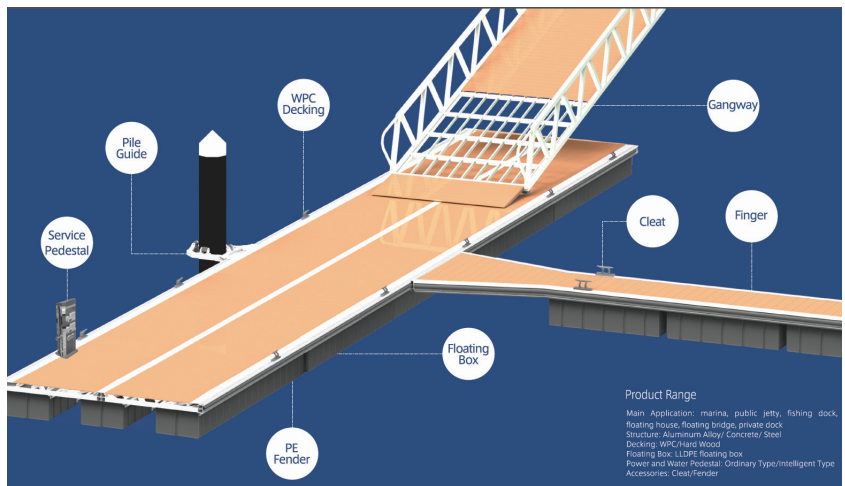
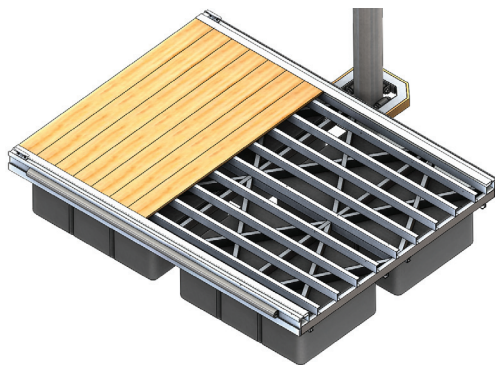


GANGWAYS

- Gangways are an integral part of any pontoon or marine construction. Our Gangways are designed and constructed to provide a sturdy and practical means access to your floating facility.
- The gangway is made of the same Marine Grade Aluminium as that used for the pontoon.



FEATURES:





NJ MARITECH
INTERNATIONAL FZE

Marine Safety Provider Internationally

E1 - 3314 C, Amber Gem Tower, Ajman Free Zone Building,
Sheikh Khalifa Bin Zayed Street, Bank Street, Ajman, U.A.E
M: +971 50 199 4849, E: vinfred@njmaritech.com

Web: www.njmaritech.com